

What is Response to Intervention (RtI)?

Response to Intervention (RtI) is a model that we are using throughout our schools in the Ken-Ton School District. As defined by New York State Education Department (NYSED), “RtI is a process used in schools to provide well-designed instruction, closely monitor all students’ progress and provide additional instructional supports to students who are struggling. This additional help is to assist those students to keep up with learning in their classrooms, particularly in the areas of reading and math.”¹

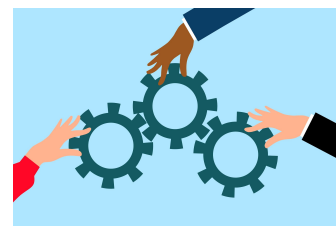
Response to Intervention is one way to ensure all learners achieve their full potential. If a child is struggling academically, the RtI model exists to help determine if the struggle is an *instructional* deficit, rather than a *learning* deficit. If the student isn’t responsive to the core instruction in the classroom, s/he may benefit from receiving the instruction in a different way to be more successful. We are currently applying the RtI model to the areas of Reading and Math in our elementary schools.

We use aimswebPlus as a screening tool three times per year with all students at the elementary level to identify students who are not making academic progress at expected rates in reading and math. Based on the results of the screening, as well as other assessment measures, students may qualify different levels of instructional support, also referred to as “tiers.” The specific needs of each student are addressed through increasingly intensive levels of targeted, focused instruction. Tier 1 is the core instruction, delivered to all students by the classroom teachers, Tier 2 and 3 interventions are usually delivered by reading and math interventionists in a small group or individualized setting.

Individual student progress and achievement are carefully monitored and revisited on a cyclical basis to determine if the instruction that is being delivered and the interventions being used are positively affecting student learning outcomes. We work to continually identify, plan, and deliver instruction that best meets individual student needs. Teachers and interventionists will share information regarding academic progress with students and parents throughout the school year.

If you wish to know more about RtI, please contact your child’s teacher, interventionist, and visit the following links for more information:

- [NYSED Parent Guide to Response to Intervention - Pamphlet](#)
- [New York State Response to Intervention Guidance](#)



¹ <http://www.p12.nysed.gov/specialed/RTI/parent.htm>